

## Hook-Type Latches

**Stainless Steel, with Operating Elements,  
Not Lockable**

### SPECIFICATION

#### Types

- Type **SG**: With star knob
- Type **KGN**: With wing knob
- Type **HGN**: With lever
- Type **SKN**: With wing knob
- Type **STN**: With T-handle

#### Version of the hook

- **H1**: Pivoting radius  $R=28$

#### Identification no.

- No. **1**: Without latch bracket
- No. **2**: With latch bracket

#### Lock housing

Stainless steel **N**

- AISI 303 for type SG / KGN / HGN
- AISI 316 for type SKN / STN

#### Operating element

- Stainless steel AISI 304 for type SG  
Sheet metal drawn / Hub welded
- Stainless steel AISI CF-8 for type KGN / HGN
- Stainless steel AISI 316 for type SKN / STN

#### Other parts

Stainless steel AISI 304

### INFORMATION

Hook-type latches GN 115.8-WOE-NL-SST with hook and catch are mainly used for sliding doors and flaps. The locking action is in radial direction to the axis of rotation, resulting in a wide variety of different uses.

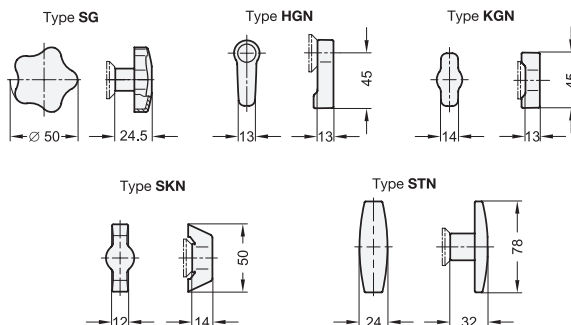
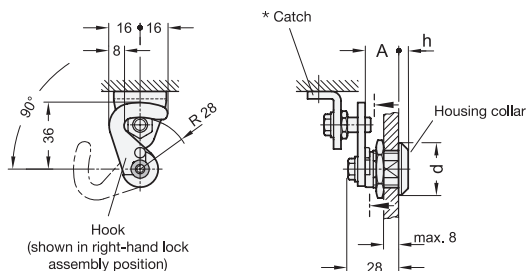
The hook-type latches GN 115.8-WOE-NL-SST are supplied with loosely enclosed hook.

### ON REQUEST

- Hook-type latches with other hook distance A
- Hook with other pivoting radius R

### TECHNICAL INFORMATION

- Construction and assembly instructions (see page )
- Overview Latch Types (see page 1456)
- Stainless Steel Characteristics (see page A26)



#### GN 115.8-WOE-NL-SST-SG

STAINLESS STEEL

Description	Hook distance A	d	h	
GN 115.8-SG-18-H1-N-1	18	28	4	90
GN 115.8-SG-18-H1-N-2	18	28	4	136

#### GN 115.8-WOE-NL-SST-KGN

STAINLESS STEEL

Description	Hook distance A	d	h	
GN 115.8-KGN-18-H1-N-1	18	28	4	55
GN 115.8-KGN-18-H1-N-2	18	28	4	101

#### GN 115.8-WOE-NL-SST-HGN

STAINLESS STEEL

Description	Hook distance A	d	h	
GN 115.8-HGN-18-H1-N-1	18	28	4	94
GN 115.8-HGN-18-H1-N-2	18	28	4	140

\* Dimensions of the latch bracket

#### GN 115.8-WOE-NL-SST-SKN

STAINLESS STEEL

Description	Hook distance A	d	h	
GN 115.8-SKN-18-H1-N-1	18	32	6	86
GN 115.8-SKN-18-H1-N-2	18	32	6	132

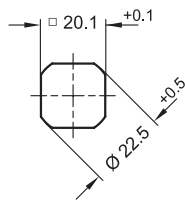
#### GN 115.8-WOE-NL-SST-STN

STAINLESS STEEL

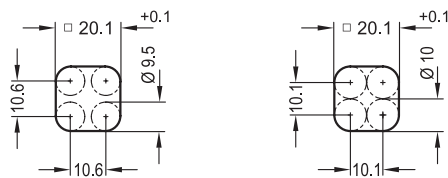
Description	Hook distance A	d	h	
GN 115.8-STN-18-H1-N-1	18	32	6	87
GN 115.8-STN-18-H1-N-2	18	32	6	132

\* Dimensions of the latch bracket

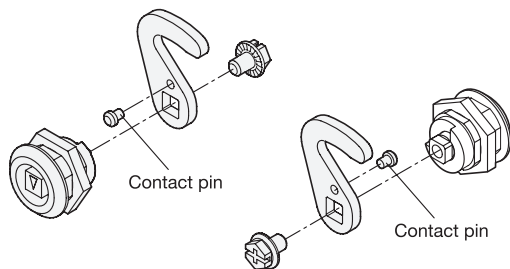
Installation hole for punching or laser machining



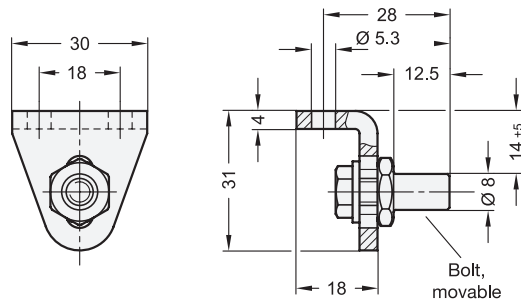
Installation hole for drilling or milling



Assembly latch and hook



Dimensions of the latch bracket



GN 115.8-WOE-NL-ZD Hook-Type Latches, Housing Zinc Die Casting, with Operating Elements, Not Lockable  
GN 115.8-L-ZD Hook-Type Latches, Housing Zinc Die Casting, with Operating Elements / Operation with Key, Lockable

